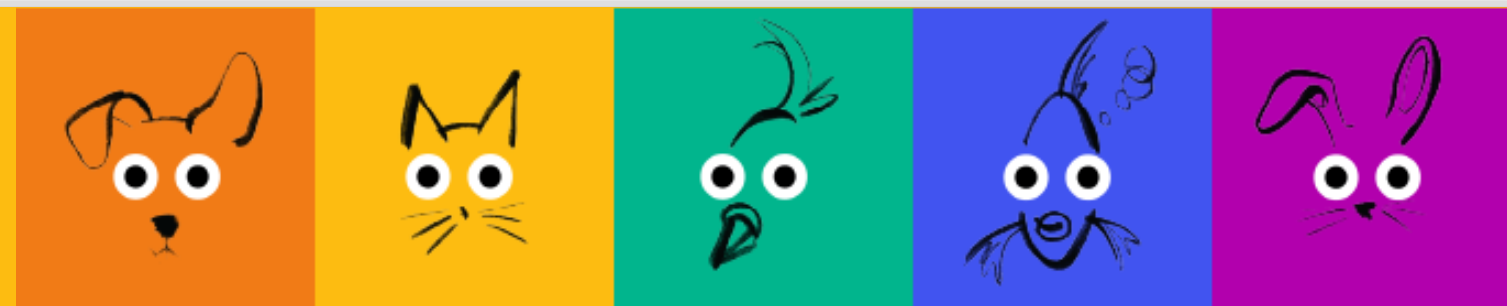


# UK Pet Food Ingredients Handbook Explainer



“This handbook provides a practical tool - driving action to mitigate the impacts of the ingredients we use in pet food. It enables companies of all sizes to make informed decisions on sourcing ingredients.”

“UK Pet Food working to advance pet health and well-being with quality nutrition from a sustainable, progressive pet food industry.”



# UK Pet Food Sustainability Priorities



Packaging  
Recyclability



Sustainable  
Ingredients



Animal  
Welfare

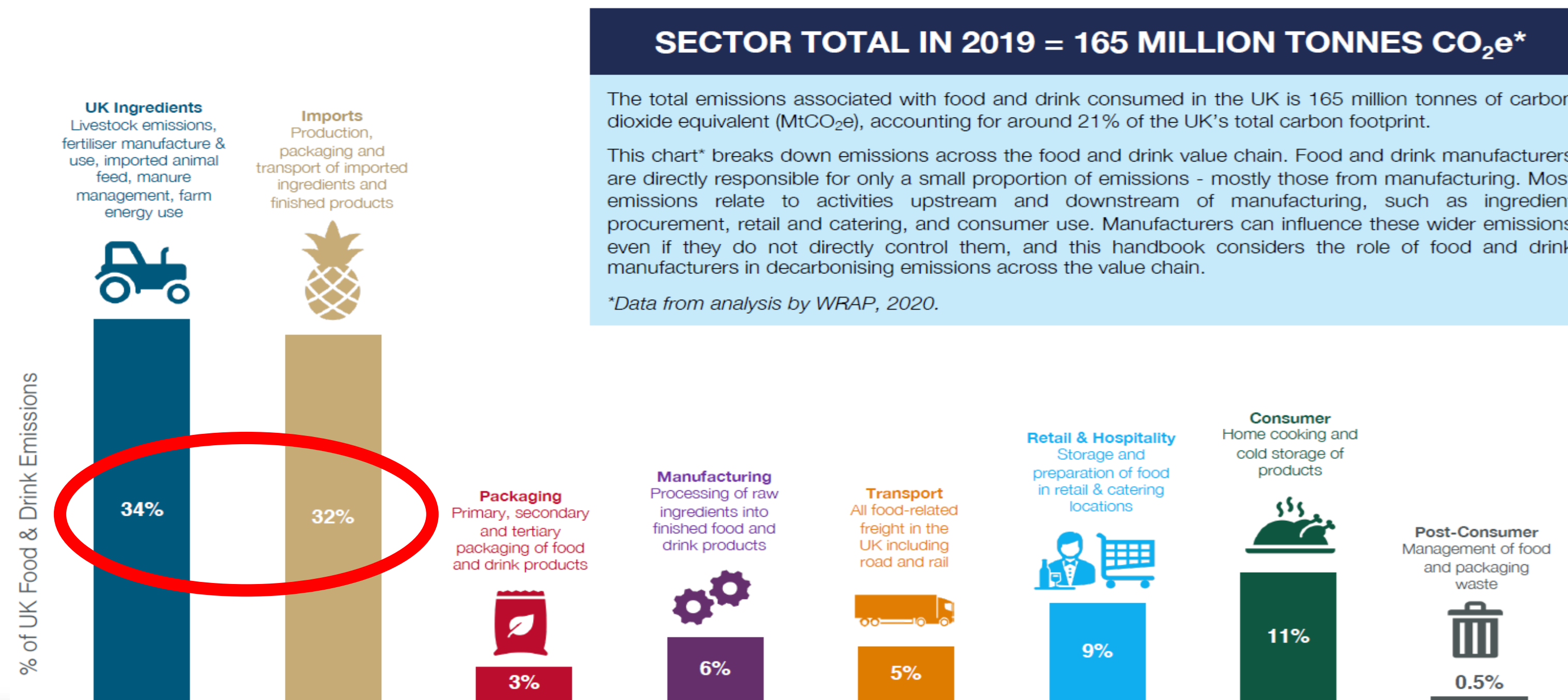


Environmental  
Impacts

## Understanding our impacts

66% of emissions for the food and drink sector are related to ingredients.

This highlights the importance of focusing on pet ingredients.



# Understanding our impacts

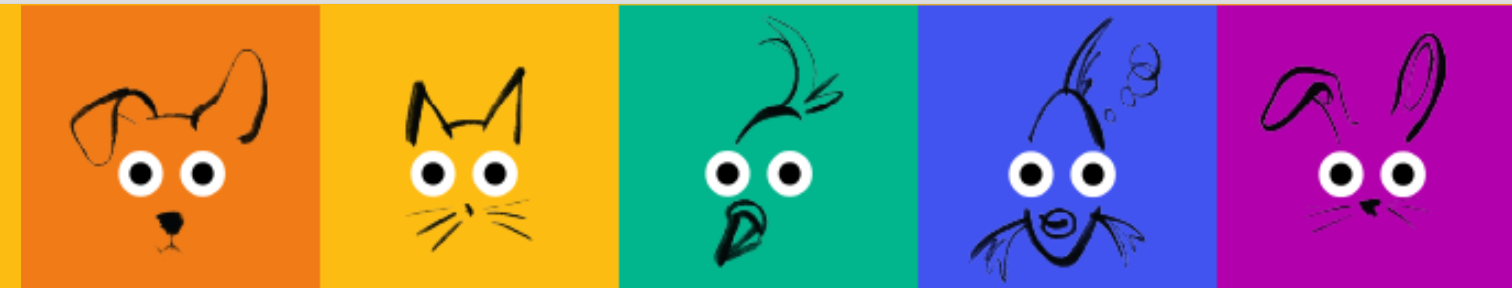


- We commissioned an ingredients Life Cycle Analysis – LCA working with renowned consultants, 3Keel. The 7 ingredients constitute 81% of ingredients of cat and dog food sold in the UK (by weight) and includes the different parts of the animal used (muscle, offal, rendered meat etc).



We assessed these ingredients across 5 metrics to ensure a robust approach.

UK Pet Food's Aims:  
-Improve understanding of our impacts.  
-Help manufacturers understand their scope 3 impacts and identify steps to reduce their impact.








# Key findings of the impacts of the ingredients assessed

Pet food ingredients account for **1.2%** of emissions from ingredient production for food and drink consumed in the UK



Economic allocation methodology used for the LCA as per FEDIAF PEF. Ensures a consistent approach. It is also the method officially adopted in the EU endorsed PEFCRs

ENVIRONMENTAL METRIC	IMPACTS (OF 7 ASSESSED INGREDIENTS)	PUTTING THE NUMBERS IN CONTEXT
 GHG emissions	1.2 MtCO <sub>2</sub> e	Pet food ingredients account for <b>1.2%</b> of emissions from ingredients production for food and drink consumed in the UK
 Land use	2,700 km <sup>2</sup>	<b>1.6%</b> of the UK's total agricultural area
 Deforested area	<b>34%</b> of soy embedded in UK pet food is associated with a "very high" deforestation risk	
 Water consumption	4,600 million m <sup>3</sup>	<b>6%</b> of the water used to produce food and drink consumed in the UK
 Water pollution	12,000 t - nitrogen 440 t - phosphates	<b>1%</b> of UK nitrogen losses

# THE UK PET FOOD INGREDIENTS HANDBOOK



1

## IDENTIFY

YOUR INGREDIENTS THAT  
HAVE THE GREATEST  
IMPACT



2

## ENGAGE

WITH YOUR SUPPLIERS TO  
REDUCE THE RELATIVE  
IMPACT OF THE 'BIG IMPACT'  
INGREDIENTS



3

## REFORMULATE

YOUR PRODUCTS TO USE  
FEWER BIG IMPACT  
INGREDIENTS



4

## MEASURE

THE IMPACTS SPECIFIC  
TO YOUR PRODUCT  
RANGES AND DEVELOP  
AN IMPACT REDUCTION  
STRATEGY



5

## EDUCATE

YOUR CUSTOMERS TO  
HELP THEM MAKE  
INFORMED CHOICES  
THAT ARE GOOD FOR  
THEIR PET AND THE  
PLANET



**SIMPLE, ACTIONABLE STEPS TO IMPROVE  
THE SUSTAINABILITY OF PET FOOD INGREDIENTS**

Visit [ukpetfood.org](http://ukpetfood.org) to find out more



# How the Handbook is being used by members

The UK Pet Food Ingredients Handbook is a useful tool as a start point for Scope 3 emissions analysis. We have been using it as the basis for the discovery phase of our Scope 3 audit and action plan.

Will Bushell, IPN.

It's a fantastic resource. We did a training day with our team, they were super engaged and found it incredibly useful. They found it informative in terms of starting to understand the formulation choices the entire industry is going to have to consider going forwards.

Charlotte Dixon, Purina.



Visit our Sustainability Hub for the Handbook and more information on our wider sustainability work. Non-members should contact [info@ukpetfood.org](mailto:info@ukpetfood.org).

