

HYGIENE & HANDLING ADVICE FOR COMMERCIALLY PREPARED RAW PET FOOD, FROM FREEZER TO BOWL

YOUR DOG'S RAW FOOD



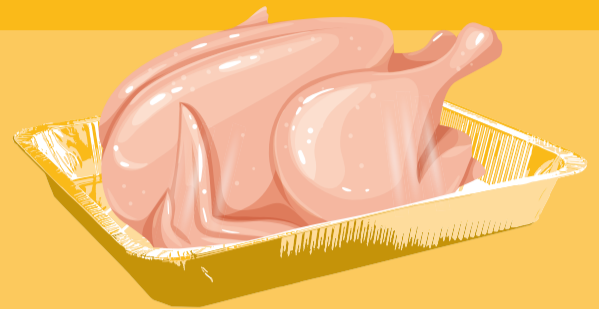
YOUR ROAST DINNER



FREEZER



Read information on the product packaging for freezing directions



DEFROST

Defrost in an airtight, leak-proof container at the bottom of the fridge. Keep for up to 3 days after defrosting. Never refreeze.

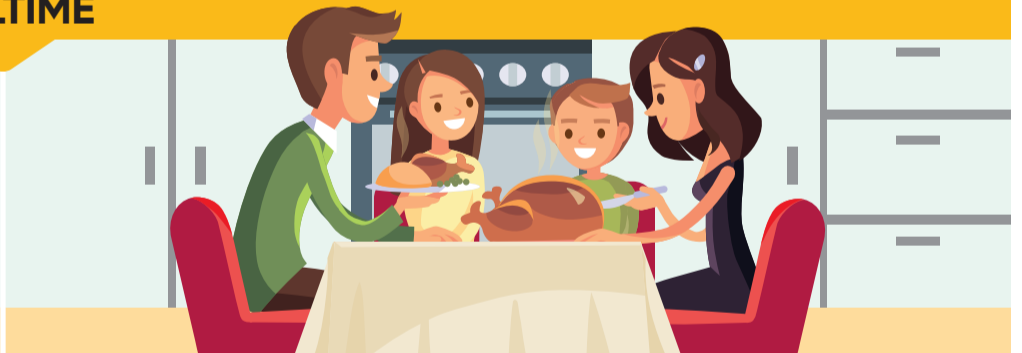


PREPARING



Wash your hands with hot water and disinfectant soap after handling raw meat and its packaging.

MEALTIME

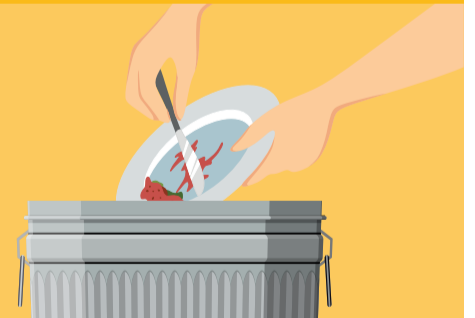


AFTER THE MEAL

Remove and carefully dispose of any uneaten raw pet food, soon as your pet has finished eating.



Clear away the plates and remove all leftovers.



KEEPING IT CLEAN

Immediately after each use, wash and disinfect all surfaces, dishes and utensils that have been in contact with raw food.

